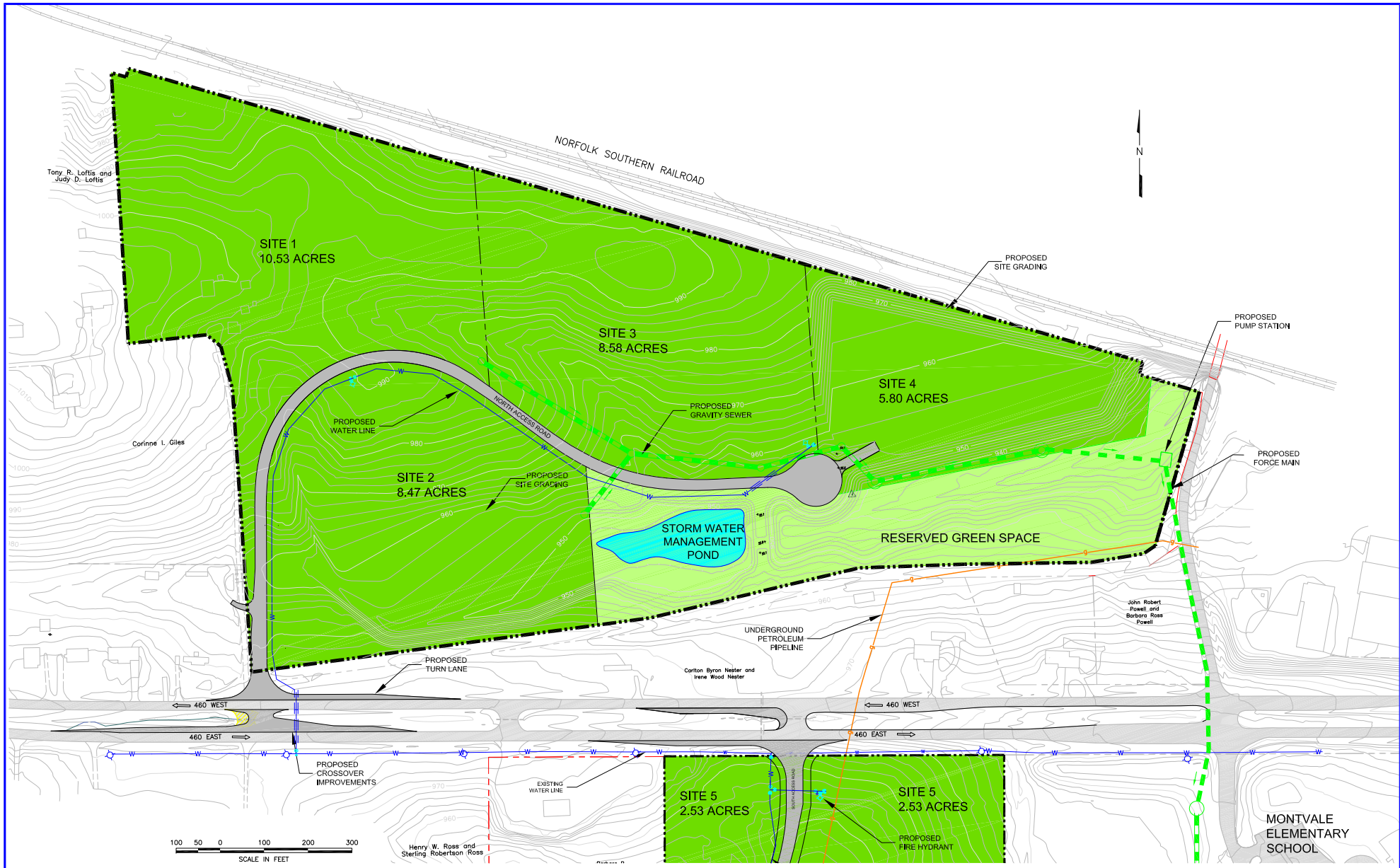


LOT PRICES FOR MONTVALE CENTER FOR COMMERCE  
7/1/09

BUSINESS Park – ZONED PID

<u>Lot #</u>	<u>Size</u>	<u>Price</u>	
Parcel #1	9.53 Acres	\$238,250	
Parcel #2			
Lot 1	1.1 acres	\$27,500	SOLD
Lot 2	1.5 acres	\$37,500	SOLD
Lot 3	1.7 acres	\$42,500	
Lot 4	4.0 acres	\$88,500	SOLD
Parcel #3	8.58 Acres	\$214,500	
Parcel #4	5.8 Acres	\$290,000	Note, this lot is graded



**ANDERSON & ASSOCIATES, INC.**  
 Professional Design Services  
 www.andassoc.com  
 Virginia - North Carolina - Tennessee  
 100 Andmore St.  
 Blacksburg, Va. 24060  
 540-552-5592

DATE : SEPTEMBER 2001  
 DESIGNED : JCE  
 DRAWN : JCE  
 CHECKED : GSG

REVISIONS:

**MONTVALE CENTER FOR COMMERCE**  
 BEDFORD COUNTY, VIRGINIA

**NORTH PARCEL**

DOCUMENT NO:  
**17264 - 010**  
 1 SHEET  
 OF 1

stermick / Aug. 14, 2009 5:08pm / Display revised for framing.DWG: Layout1

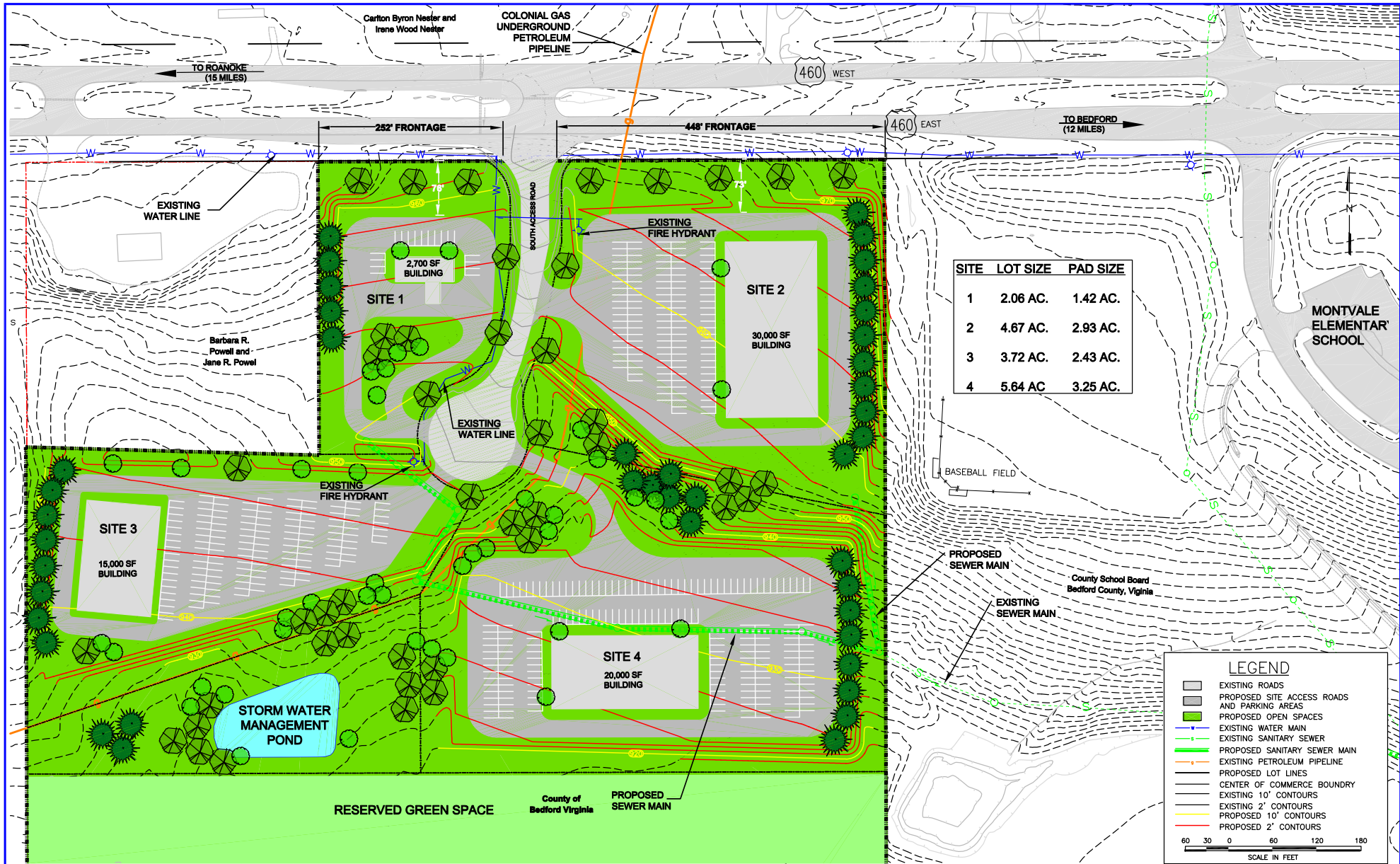
MONTVALE CENTER FOR COMMERCE – COMMERCIAL SECTION- ZONED PCD

Lot#

1	2.06 Acres	\$131,500
2	4.67 Acres	\$297,500
3	3.72 Acres	\$139,500
4	5.64 Acres	\$211,500

Notes: Public water and sewer to the lots. State maintained road paved to cul-de-sac.

Property is listed with Poe and Cronk, 2009



**ANDERSON & ASSOCIATES, INC.**  
 Professional Design Services  
 www.andassoc.com  
 Virginia - North Carolina - Tennessee

100 Androme St.  
 Blacksburg, Va. 24060  
 540-552-5592

DATE : 14 MAR 02  
 DESIGNED : MCM  
 DRAWN : JCE  
 CHECKED : GSG

REVISIONS:

**MONTVALE CENTER FOR COMMERCE - SOUTH**  
 BEDFORD COUNTY, VIRGINIA

**DEVELOPMENT PLAN**

DOCUMENT NO.  
**17264 - 011**  
 SHEET  
**1** OF **1**

Errors / Mar 25, 2002 8:52am / Display revised for printing-3.DWG: layout1 (2)